

JAMES EDWARD

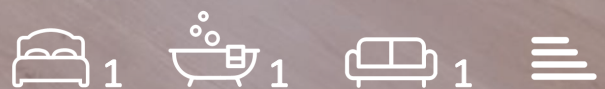
Comprehensively Cared For



Loxford House

Highbury Park, London, N5 1GF

£2,950 Per Month



Loxford House



Description

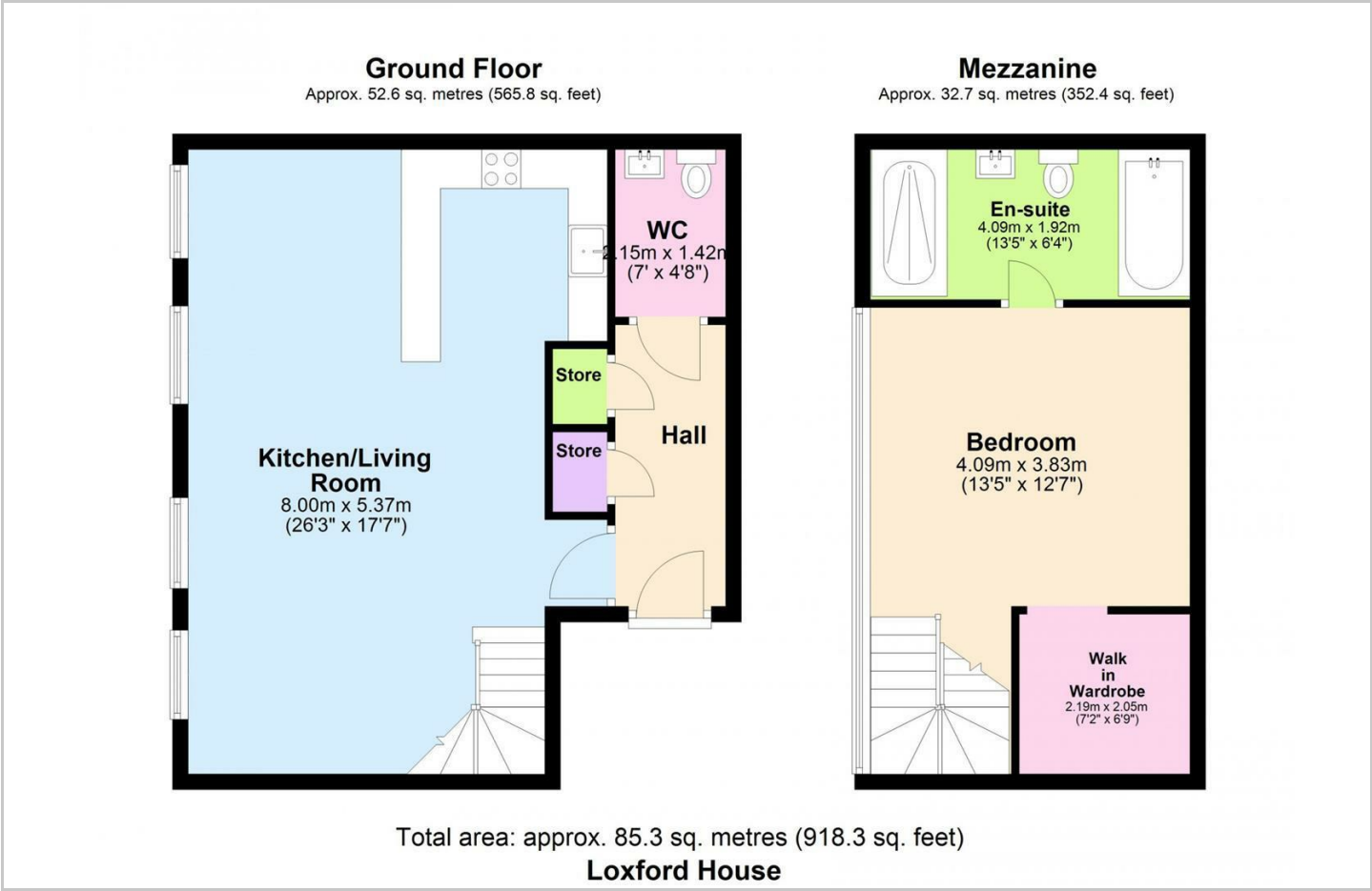
Unique one bedroom mezzanine apartment spanning 918 sq ft, situated within Loxford House itself, a private development with 24 hour concierge. Located moments' from Highbury Barn and Highbury Fields.

- Additional W/C.
- Easy reach to Highbury
- Mezzanine Bedroom
- Private Modern Development
- Concierge on site
- Integrated Appliances
- Minute's to Highbury Barn and Highbury Fields
- Split Level

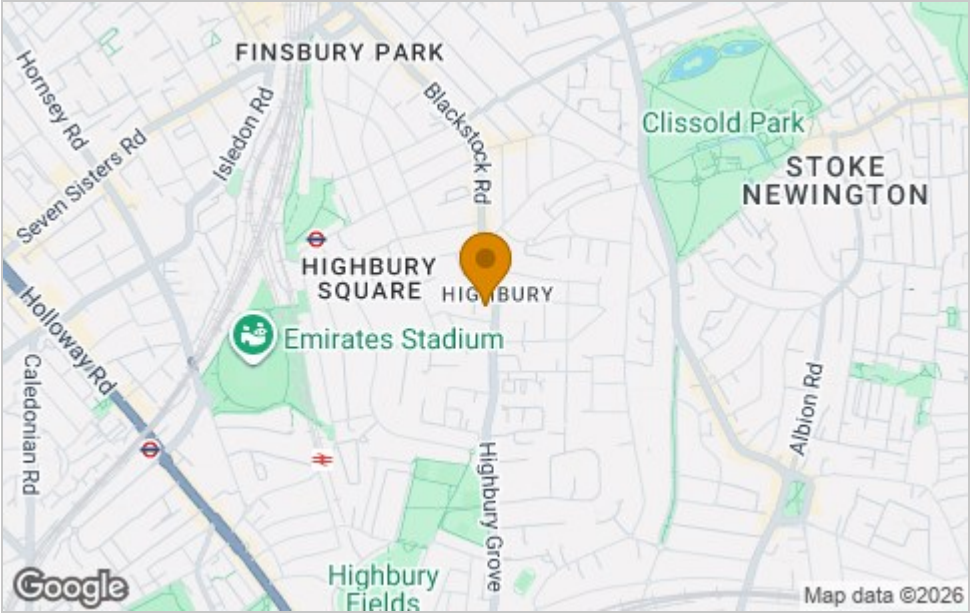




Floor Plan



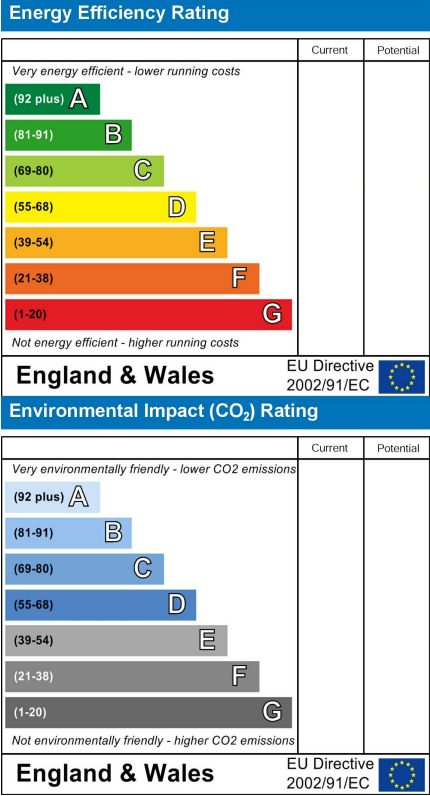
Area Map



Viewing

Please contact our James Edward Office on 020 7952 5197 if you wish to arrange a viewing appointment for this property or require further information.

Energy Efficiency Graph



These particulars, whilst believed to be accurate are set out as a general outline only for guidance and do not constitute any part of an offer or contract. Intending purchasers should not rely on them as statements of representation of fact, but must satisfy themselves by inspection or otherwise as to their accuracy. No person in this firms employment has the authority to make or give any representation or warranty in respect of the property.